

Where Is My **MVI**?



If you have trouble viewing the **MVI** interactive experience on your PC it may be due to the DVD Player application launching. This can be easily identified if the menu shown here appears on your desktop.



If this is the case you will see the DVD controller in the lower left corner (Shown here in detail).



If the DVD Player has launched it will be necessary for you to quit this application. This can be quickly and easily done by first holding down the “**Alt**” key and hitting the “**F4**” key on your keyboard.

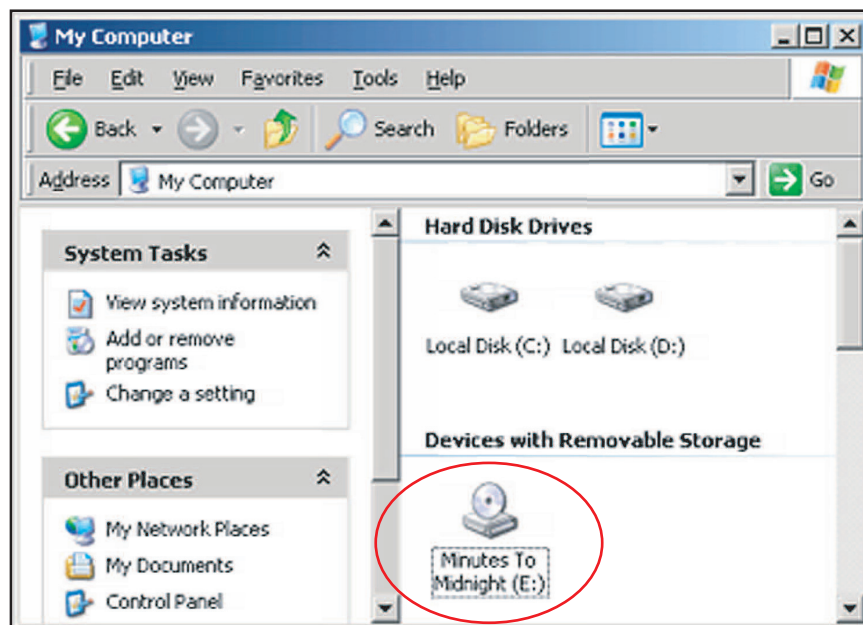


2. Press the “**F4**” key. ↵



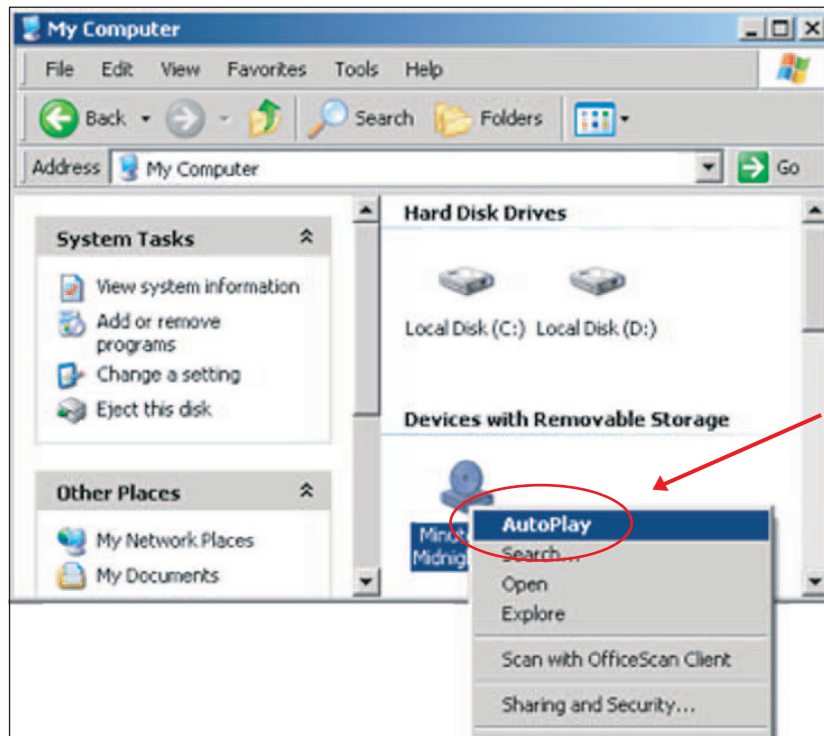
1. Hold down the “**Alt**” key ↵

After the DVD application has quit you should be able to locate the disk icon for your **MVI** by opening “**My Computer**”. Double-click on the icon to launch the program.

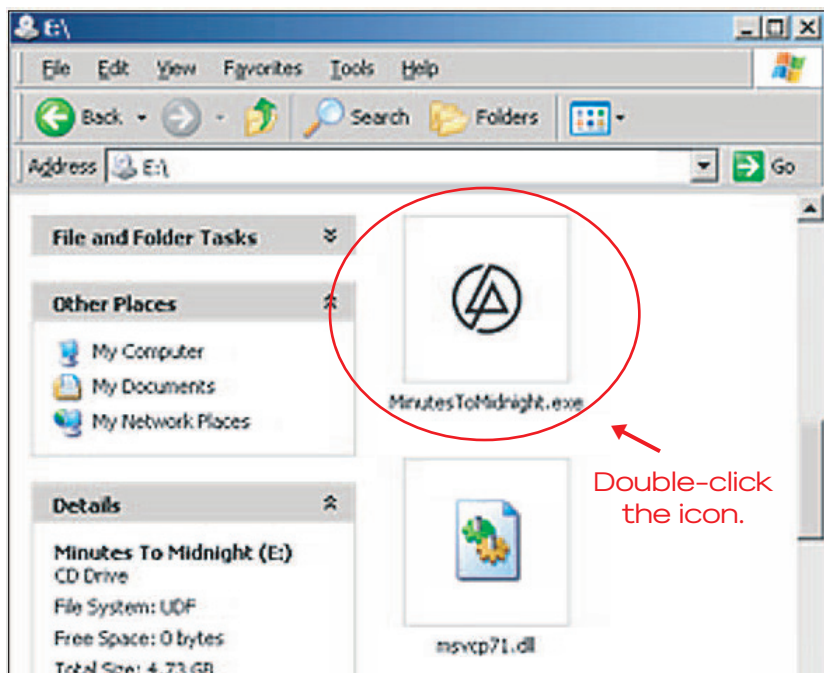


Look for the disc icon
and double-click to open.

If the application fails to launch, right-click on the disk icon and select “AutoPlay”.



If “AutoPlay” is turned off or the application still does not launch, open the disc and locate the **MVI** file ending with “.exe”. Double-click the file.



The “Loading” window will tell you that the **MVI** interactive experience for your **MVI** is about to begin.

